

INTELLIKEYS WIN 10 INSTALLER

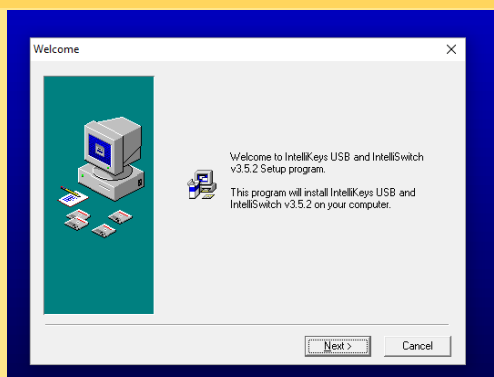
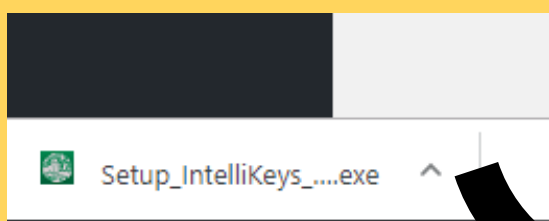
THIS INSTALLER WILL ALLOW YOUR INTELLIKEYS AND STANDARD OVERLAYS TO RUN IN WINDOWS 10!

Visit www.atmakers.org and go to Intellikeys Support, or click this direct link:
<http://atmakers.org/intellikeys/intellikeys-drivers-download>

STEP 1: DOWNLOAD THE INSTALLER.

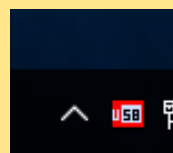
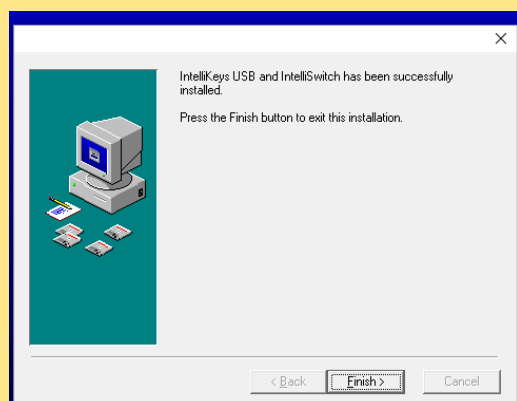
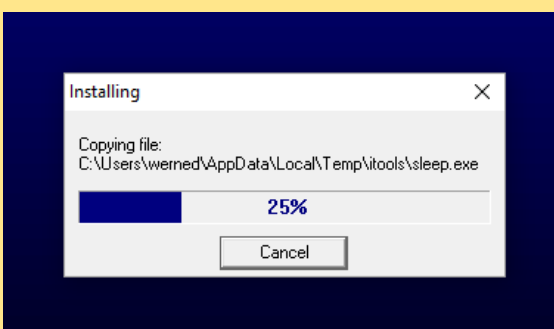


STEP 2: LAUNCH INITIAL INSTALLER



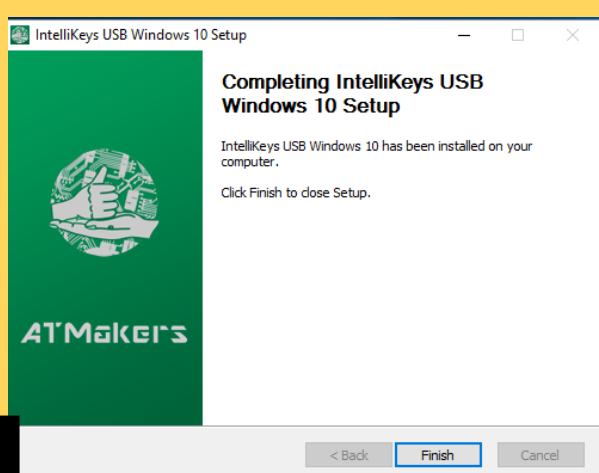
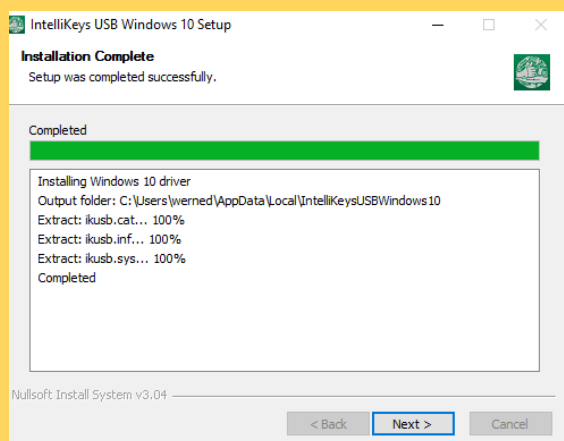
STEP 3 – RUN FIRST INSTALLER

Clicking next will run the installer, and you'll see a status bar like on the left. When it's finished the message on the right will appear. Select Finish. The familiar red USB image will appear in your taskbar.



STEP 4 – RUN THE SECOND INSTALLER.

A second installer for Windows 10 will appear on your desktop. Click next and run it, until Completed appears, and click next.



For more information, or to sign up for more details about future Intellikeys news, visit:
<http://atmakers.org/intellikeys/>